

Tochigi Prefecture

Regulations to promote safe and appropriate cycling in Tochigi

New Bicycle Regulations

Effective July 1, 2022

Mandatory Bicycle Insurance!

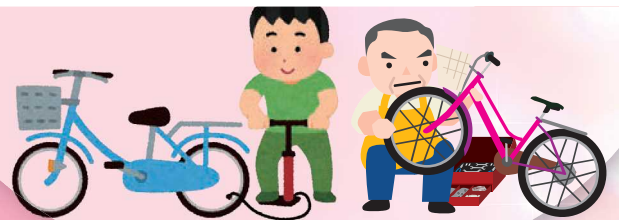


Effective April 1, 2022

Make your 'Best effort'
Wear a helmet



Make your 'Best effort'
Inspection and maintenance



ABSOLUTE DON'TS: 'Multitasking'

Check the official site for more info!
↓

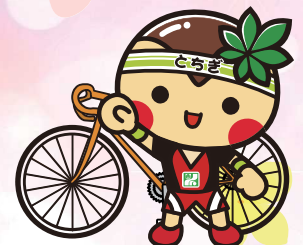
Using your phone



Double riding



Holding an umbrella



Tochigi Prefecture

This notice can be found on the official website
(<http://www.pref.tochigi.lg.jp>)

Do you have bicycle insurance?

Let's figure out if you're covered with Bicycle Accident Liability Insurance!

START

If you get in an accident while riding your bicycle and injure someone, do you have insurance that will compensate them (Bicycle Accident Liability Insurance)?

Yes

I don't know

No

Is there a TS Mark on your bicycle?

*Only valid for 1 year after inspection date.



Yes

No

Do you have auto insurance, fire insurance, or injury insurance?

Yes

I don't know

No

Are you enrolled in co-op or group insurance (such as insurance from your workplace or school PTA)?

Yes

I don't know

No

Do you have a credit card?

Yes

No

Is personal liability insurance part of your basic coverage or a rider to your insurance plan? (The rider name may vary, for example Daily Life Liability Insurance, etc.)

Yes

I don't know

No

You are already enrolled in Bicycle Accident Liability Insurance. Check the details (payout amounts etc.) to make sure you're completely covered!

Check with your insurance provider or co-op. If you don't have sufficient coverage, you'll need Bicycle Accident Liability Insurance!

You need to enroll in Bicycle Accident Liability Insurance!

Bicycle Accident Liability Insurance and other types of insurance that will cover injuries caused in a bicycle accident

Insurance for damage in daily life, etc.		
Types	Description	
Personal liability insurance	Cyclist insurance	Insurance to cover bicycle accidents
	Rider to auto insurance	Coverage attached to auto insurance plan
	Rider to fire insurance	Coverage attached to fire insurance plan
	Rider to injury insurance	Coverage attached to injury insurance plan
Group insurance	Organizational insurance (workplace, etc.)	Insurance connected to group membership
	PTA insurance	Insurance offered by PTA or school
Co-op	Kokumin Kyosai Co-op, Prefectural Co-op, etc.	
TS Mark Insurance	Vehicle insurance coverage for bicycles	
Credit Card Insurance	Coverage attached to credit card plan	

Coverage for damage at work		For business operators
Types	Description	
Facility Owner Liability Insurance	Insurance to cover accidents during work	
TS Mark Insurance	Vehicle insurance coverage for bicycles	

Questions about bicycle rules?

Tochigi Prefecture Resident Safety and Security Division

TEL 028-623-2185

(Official website: <http://www.pref.tochigi.lg.jp>)

栃木県自転車条例

Search